



Vortex Pro

Wash System with Chemical Pump



STANDARD FEATURES

- Automatic chemical pump
- Factory authorized startup
- Type 304 polished stainless steel construction
- 14 gauge stainless tanks and drain boards
- 9-1/2" high x 2-1/2" deep back splash
- Twist handle drains
- Stainless steel legs and cross rails
- Stainless steel adjustable bullet feet
- Stainless steel pump and impeller
- Rear discharge
- Removable strainer plates
- Fully enclosed wash pump motor with permanently sealed bearings, 2 Hp for single phase and 3 Hp for three phase
- Motor overload protection, manual reset
- Low water protection for wash pump motor
- 5,000 watt wash tank heater
- 1 year parts and labor on pumps and control panel

SPECIFIER STATEMENT

Specified unit will be Bi-Line Vortex Wash System. Features (1) 3 Hp wash pump motor, intuitive control system, stainless steel pump and impeller.

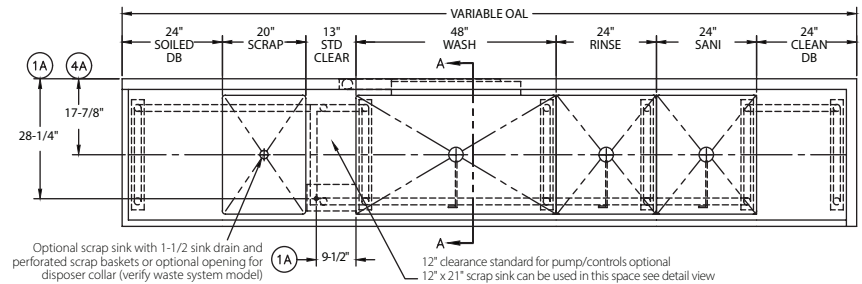
OPTIONS & ACCESSORIES

- ☐ 480/60/3 electrical
- ☐ Utensil basket
- ☐ Folding wash tank cover
- ☐ Rinse tank cover
- ☐ Sanitize tank cover
- ☐ Sheet pan racking system
- ☐ Pot and pan overhead shelf with hooks
- ☐ Table mounted over shelf
- ☐ 1/2" pre-rinse sprayer
- ☐ 3/4" fill faucet
- ☐ Flanged seismic feet
- ☐ Direction from soiled to clean end (select one)
 - ☐ Left to right
 - ☐ Right to left

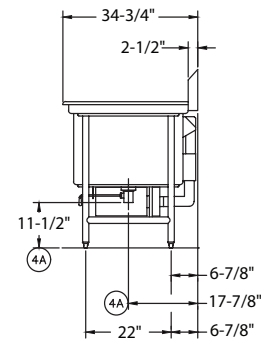
Note: 3 Hp available in 3 phase; 2 Hp available in single phase

Warning: Plumbing and electrical connection should be made by qualified personnel who will observe all the applicable plumbing, sanitation, and safety codes and the National Electrical Code.

TOP VIEW



SIDE VIEW



A

Edge Type

- ☐ 1-1/2" Hemmed
- ☐ 2-1/2" Splash

B

Drain Board

By nominal inch

- ☐ 12"
- ☐ 18"
- ☐ 20"
- ☐ 24"
- ☐ 36"
- ☐ 42"
- ☐ 48"
- ☐ 54"
- ☐ 60"
- ☐ with Disposer Collar

C

Scrap Sink

- ☐ 12"
- ☐ 18"
- ☐ 24"

Custom

- ☐ with Scrap Basket

D

Wash Tank

- ☐ 36"
- ☐ 42"
- ☐ 48"
- ☐ 54"
- ☐ 60"
- ☐ 66"

Options

- ☐ Utensil Basket
- ☐ Sheet Pan Racking System

E

Rinse Sink

- ☐ Omit
- ☐ 20"
- ☐ 24"
- ☐ 36"

F

Sanitizer Sink

- ☐ Omit
- ☐ 20"
- ☐ 24"
- ☐ 36"

G

Drain Board

- ☐ Omit
- ☐ 12"
- ☐ 18"
- ☐ 20"
- ☐ 24"
- ☐ 36"
- ☐ 42"
- ☐ 48"
- ☐ 54"
- ☐ 60"

H

Edge Type

- ☐ 1-1/2" Hemmed
- ☐ 2-1/2" Splash

Due to an ongoing value analysis program at Bi-Line, specifications contained in this catalog are subject to change without notice.

Contact factory for custom design layout

www.bilinesystems.com
info@bilinesystems.com
Rev. 2/25 Printed in U.S.A.

3765 Champion Blvd., Winston-Salem, NC 27105
Tel: 336-661-1556 Fax: 336-661-1979

2674 N. Service Rd., Jordan Station, Ontario, Canada L0R 1S0
Tel: 800-263-5798 Fax: 905-562-4618